



INSTALLATION GUIDE

RAPID TAG EVAC PC-Based Software Installation Guide Version 5.0

TABLE OF CONTENTS

- 1 ABOUT THIS GUIDE.....2
- 2 MINIMUM SYSTEM REQUIREMENTS2
- 3 VERIFYING SYSTEM REQUIREMENTS.....2
 - 3.1 Windows 10.....2
 - 3.2 Windows 7..... 4
- 4 OPENING COMMUNICATION PORTS THROUGH THE WINDOWS FIREWALL.....5
 - 4.1 Opening Port 80 for Data Transmissions5
 - 4.2 Opening Port 123 for the Time Server.....7
- 5 LOADING THE RAPID TAG EVAC SOFTWARE.....9
 - 5.1 From a DVD9
 - 5.2 From the Website9
 - 5.3 Licensing the RAPID TAG EVAC Software 11
- 6 CONTACT US.....12

1 ABOUT THIS GUIDE

This installation guide provides the information needed to install Salamander RAPID TAG EVAC software. Depending on the resources of the computer the RAPID TAG EVAC software is installed on, the installation process is estimated to take between 15 and 30 minutes to complete.

2 MINIMUM SYSTEM REQUIREMENTS

RAPID TAG EVAC software installation requires the user to have Administrator rights to the computer. In addition, the computer must meet the following minimum system requirements:

Hardware/Software	Minimum System Requirements
Processor	1 GHz Intel Compatible
RAM (Memory)	2 GB
Screen Resolution	800x600
Hard Disk Free Space	2 GB
Operating System	Windows XP Professional SP 3

Table 2.1

3 VERIFYING SYSTEM REQUIREMENTS

3.1 Windows 10

Step 1: Right-click **Start** → **System**.

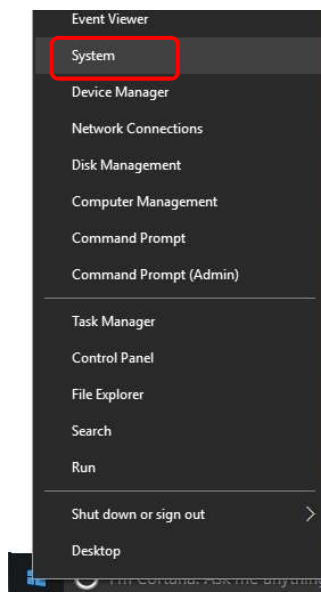


Figure 3.1.1

Step 2: Verify the computer's operating system, processor speed and RAM meet minimum requirements.

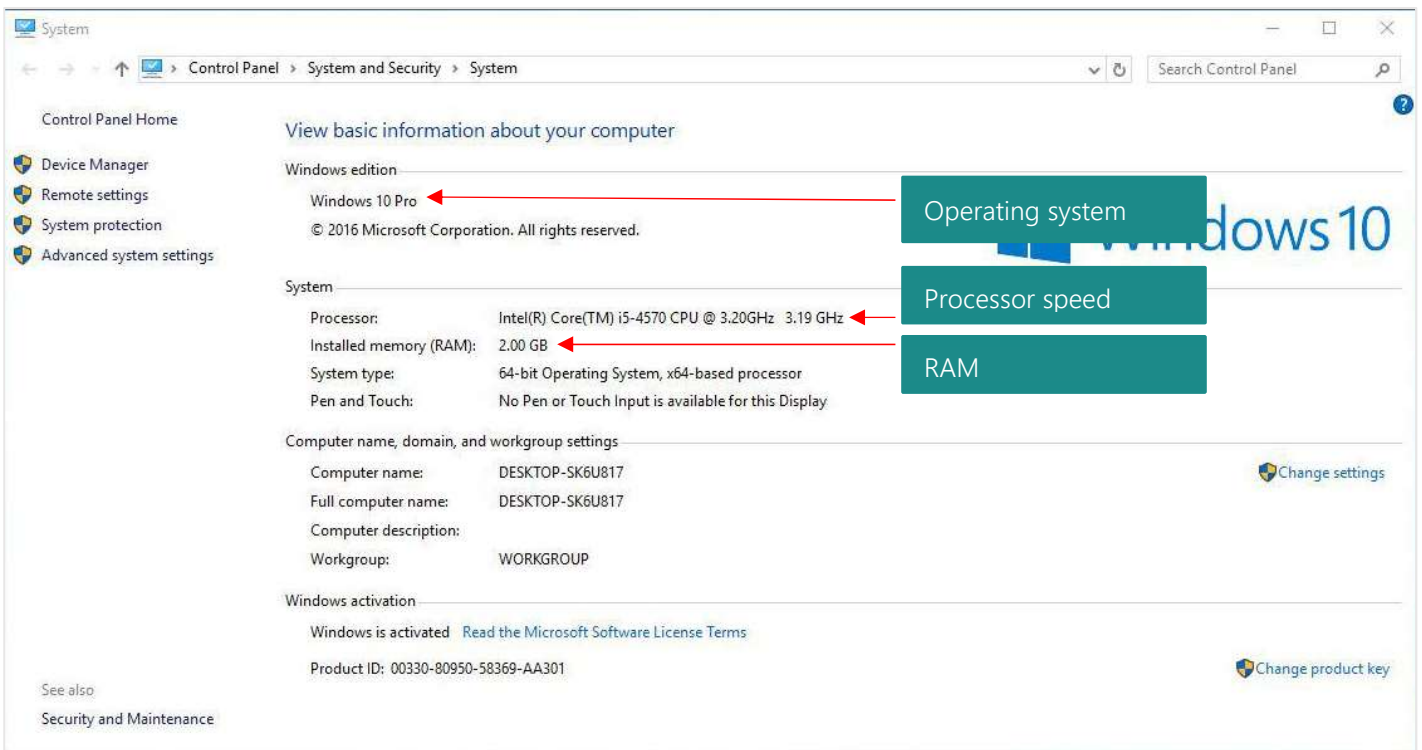


Figure 3.1.2

Step 3: To verify there is enough free space on the computer's hard disk to install RAPID TAG EVAC, right-click **Start** → **File Explorer** → **This PC**.

Step 4: Verify there is a minimum of 8 GBs of free space on the hard disk (typically the C: drive).

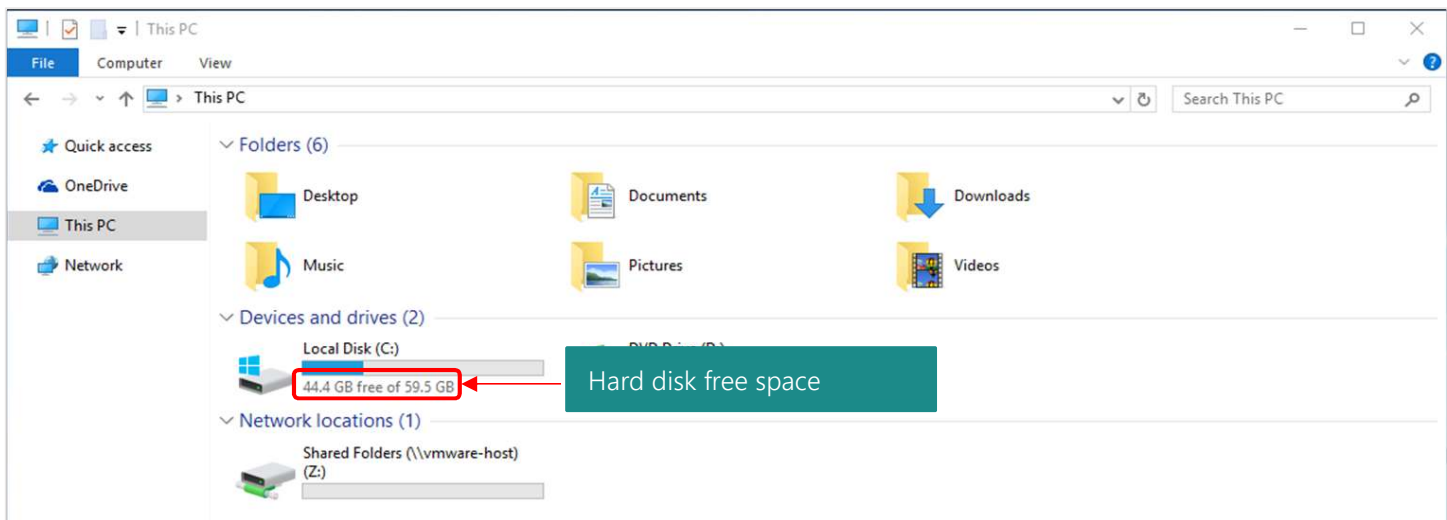


Figure 3.1.3

3.2 Windows 7

Step 1: Click Start → Right-Click Computer → Properties.



Figure 3.2.1

Step 2: Verify the computer's operating system, service pack, processor speed and RAM meet minimum requirements.

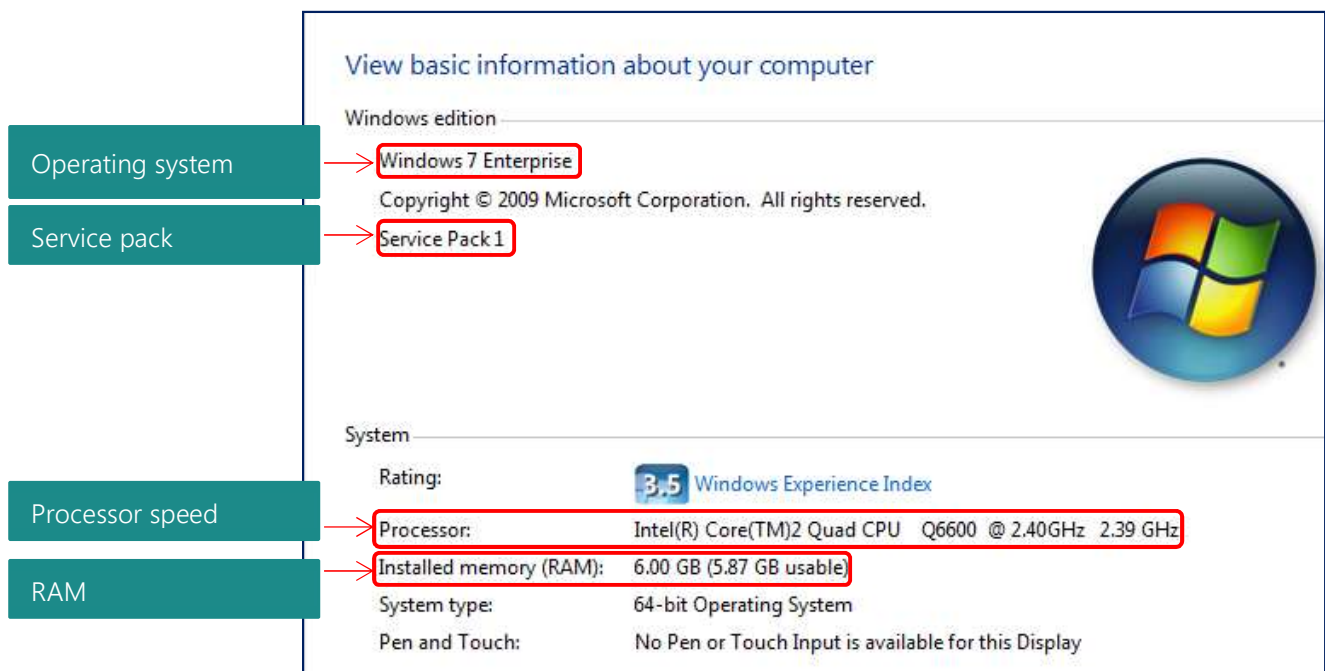


Figure 3.2.2

Step 3: To verify there is enough free space on the computer's hard disk to install RAPID TAG EVAC, click Start → Left-Click Computer.

Step 4: Verify there is a minimum of 8 GBs of free space on the hard disk (typically the C: drive).

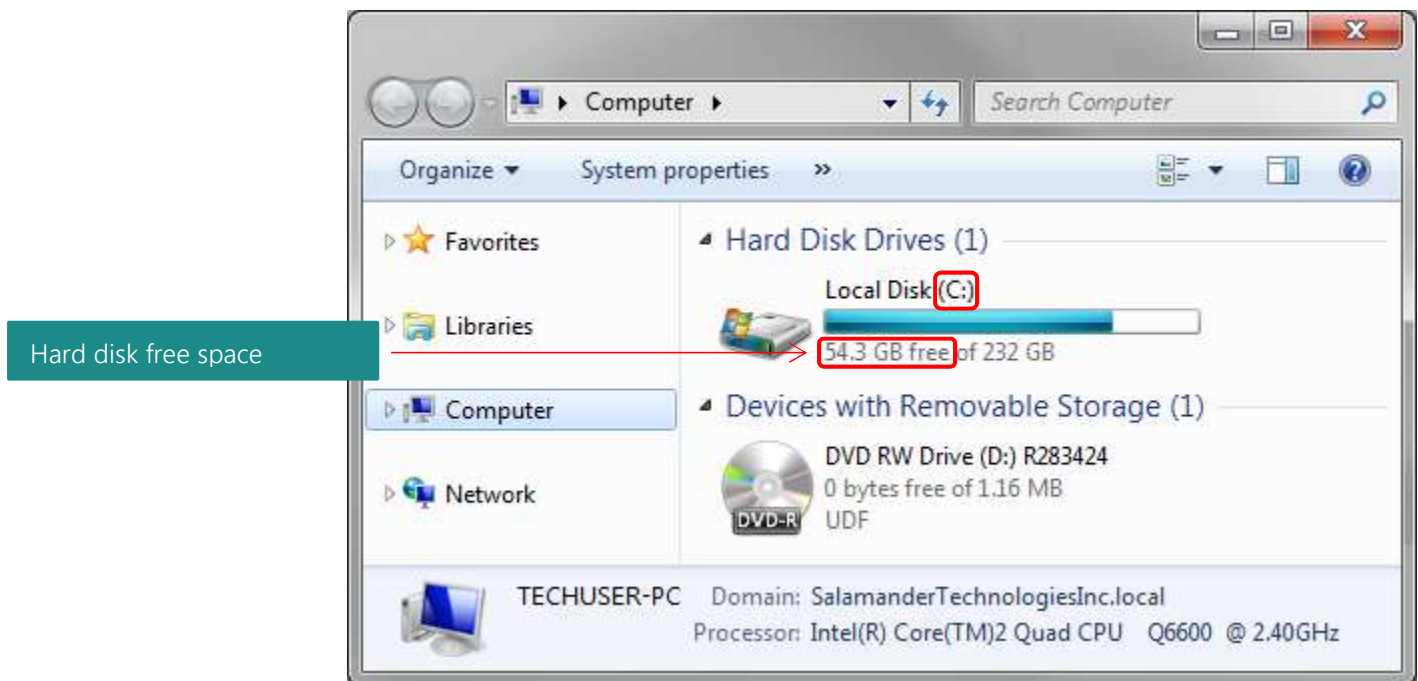


Figure 3.2.3

4 OPENING COMMUNICATION PORTS THROUGH THE WINDOWS FIREWALL

If you are syncing Salamander PC-based products with RAPID TAG EVAC, the RAPID TAG EVAC software must have access through Port 80 and Port 123 to function as a real-time Incident Command System application. If a third-party firewall utility is in use on the computer, consult your Information Technology Department for further assistance in opening communication ports.

4.1 Opening Port 80 for Data Transmissions

A port must be opened in the Windows Firewall for the RAPID TAG EVAC software on the computer to send data transmissions to other Salamander PC-based Software (such as COMMAND).

Step 1: To open Port 80, click **Start** → **Control Panel** → **System and Security** → **Windows Firewall** → **Advanced Settings**.

The **Windows Firewall with Advanced Security** screen will appear.

Step 2: Click **Inbound Rules**.

Step 3: Click New Rule.

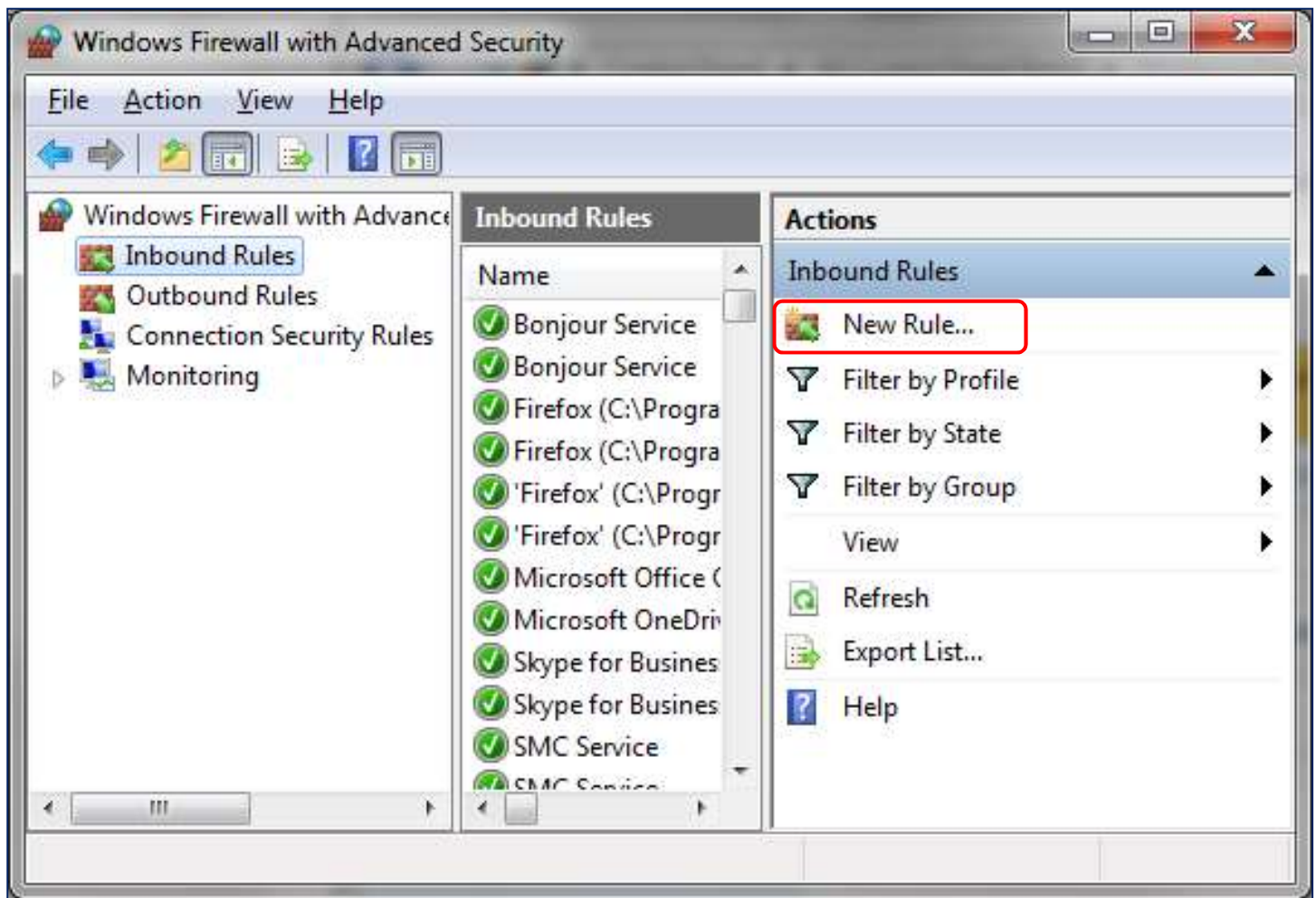


Figure 4.1.1

Step 4: New Inbound Rule Wizard will appear. Select **Port** as the type of rule to create.

Step 5: Click **Next**.

Step 6: For the Protocols and Ports screen of the wizard, select **TCP**.

Step 7: Type in "80" in the **Specific local ports** box.

Step 8: Click **Next**.

Step 9: Select **Allow the connection**.

Step 10: Click **Next**.

Step 11: For the Profile screen of the wizard, check the boxes for **Domain**, **Private** and **Public**.

Step 12: Click **Next**.

Step 13: For the Name screen of the wizard, type in a name for the new rule.

It is recommended that this rule be called "STL Data."

Step 14: Click **Finish**.

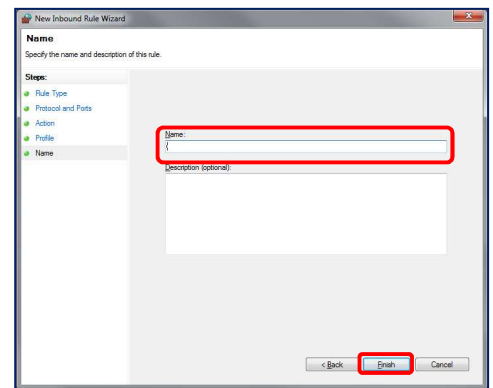


Figure 4.1.2

4.2 Opening Port 123 for the Time Server

A port must be opened in the Windows Firewall for the RAPID TAG EVAC software on the computer to receive time transmissions from the Time Server.

Step 1: To open Port 123, click **New Rule** on the Windows Firewall with Advanced Security window.

Step 2: The New Inbound Rule Wizard screen will appear again. Select **Port** as the type of rule to will create.

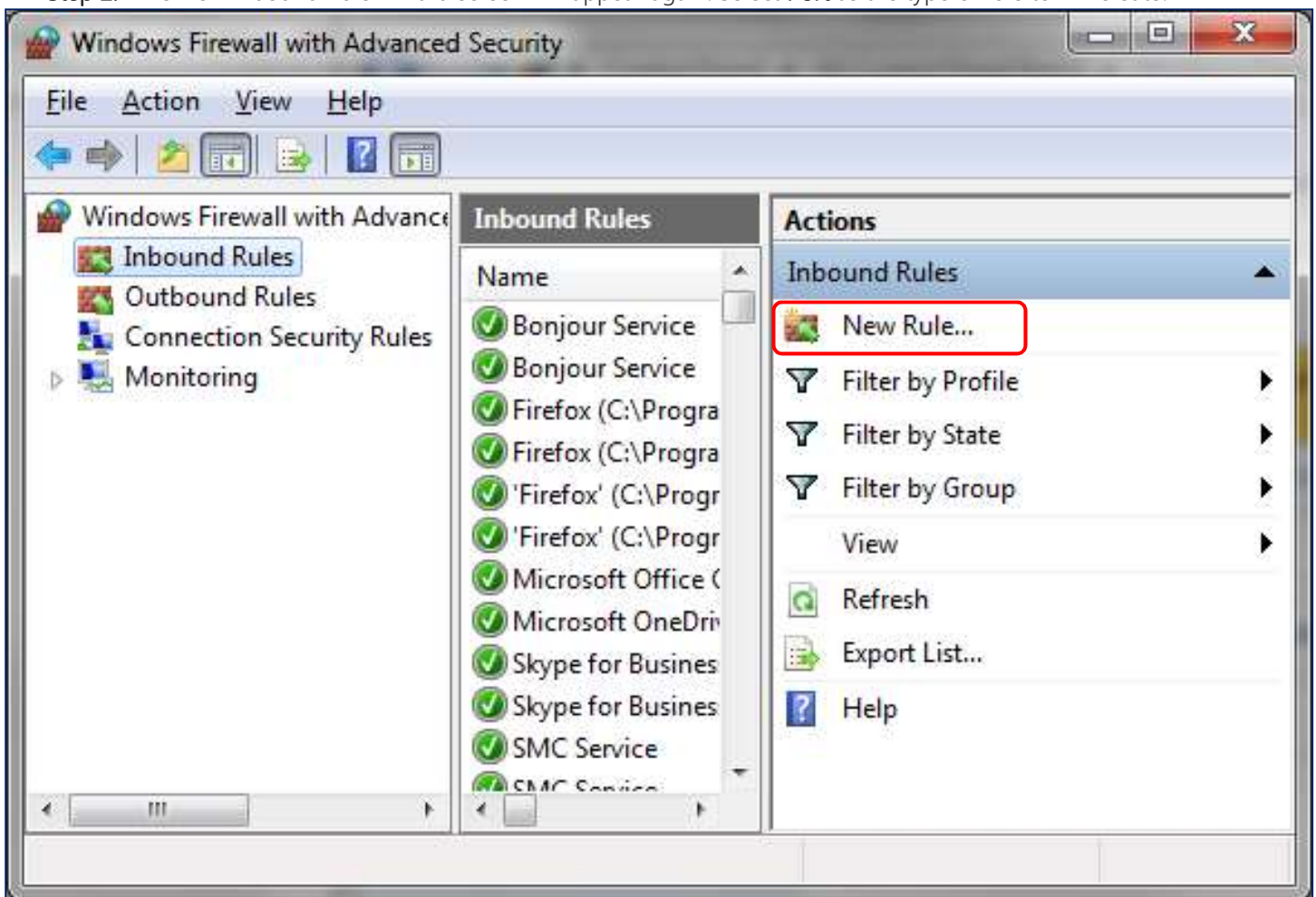


Figure 4.2.1

Step 3: Click **Next**.

Step 4: For the Protocols and Ports screen of the wizard, this time select **UDP**.

Step 5: Type in "123" in the **Specific local ports** box.

Step 6: Click **Next**.

Step 7: Select **Allow the connection**.

Step 8: Click **Next**.

Step 9: For the Profile screen of the wizard, check the boxes for **Domain**, **Private** and **Public**.

Step 10: Click **Next**.

Step 11: For the Name screen of the wizard, type in a name for the new rule. It is recommended that this rule be called "STL Time".

Step 12: Click **Finish**.

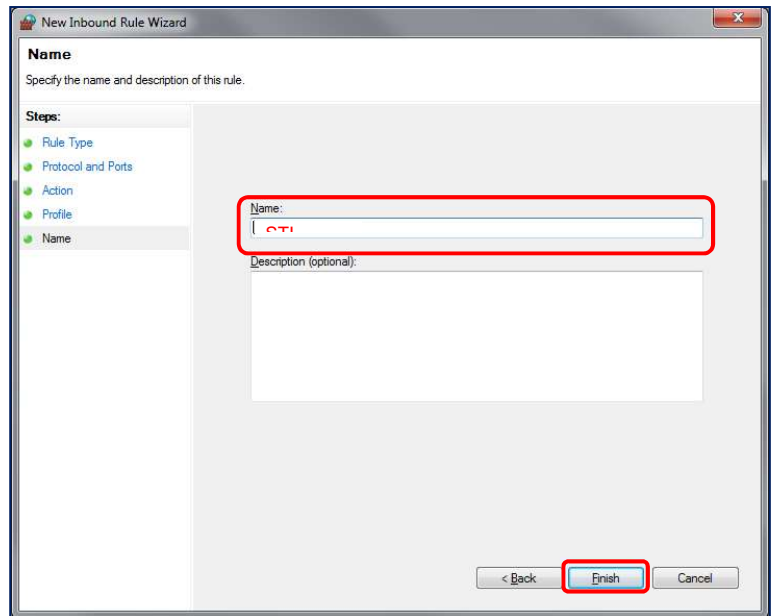


Figure 4.2.2

Step 13: Ports 80 and 123 are now opened for RAPID TAG EVAC communications. Now that the new rules have been created, verify the new inbound rules are in the **Inbound Rules** list.

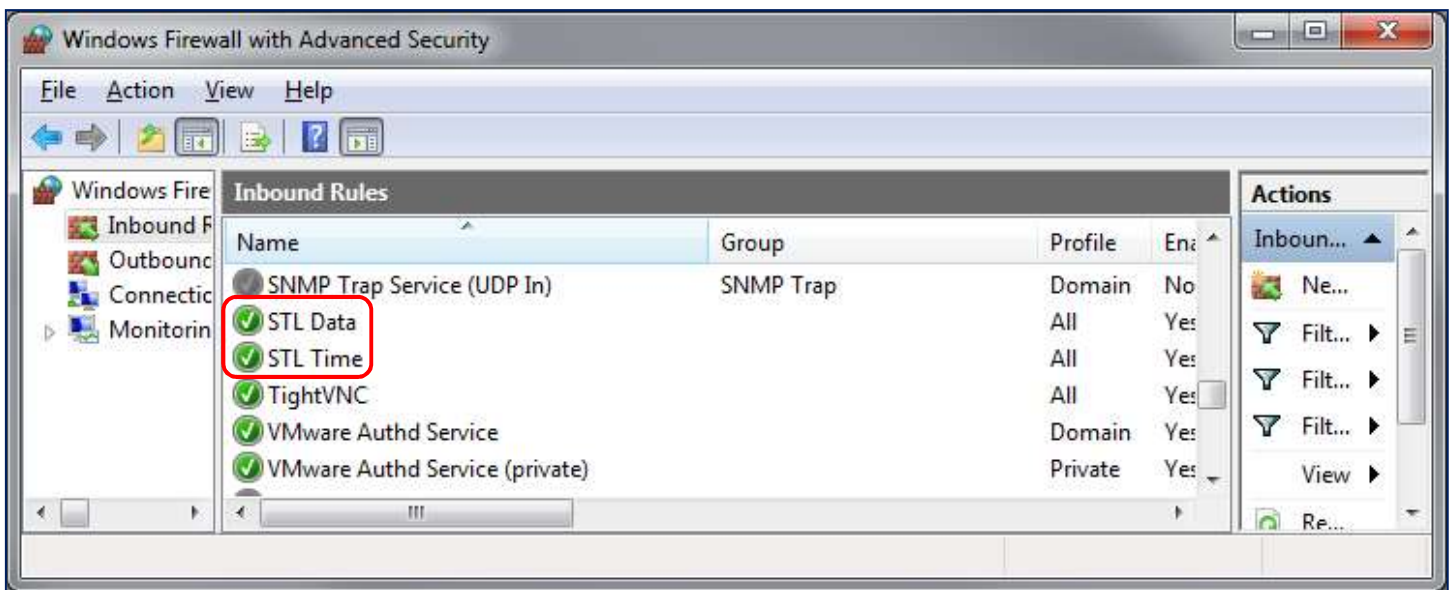


Figure 4.2.3

5 LOADING THE RAPID TAG EVAC SOFTWARE

5.1 From a DVD

Step 1: Insert the **Salamander Suite DVD**.

Step 2: Select **RAPID TAG EVAC**.

Step 3: When prompted, choose to run the file and confirm any security warnings.

NOTE: The RAPID TAG EVAC installation will include SQL Server Compact Edition and Microsoft Visual Studio Report Viewer.

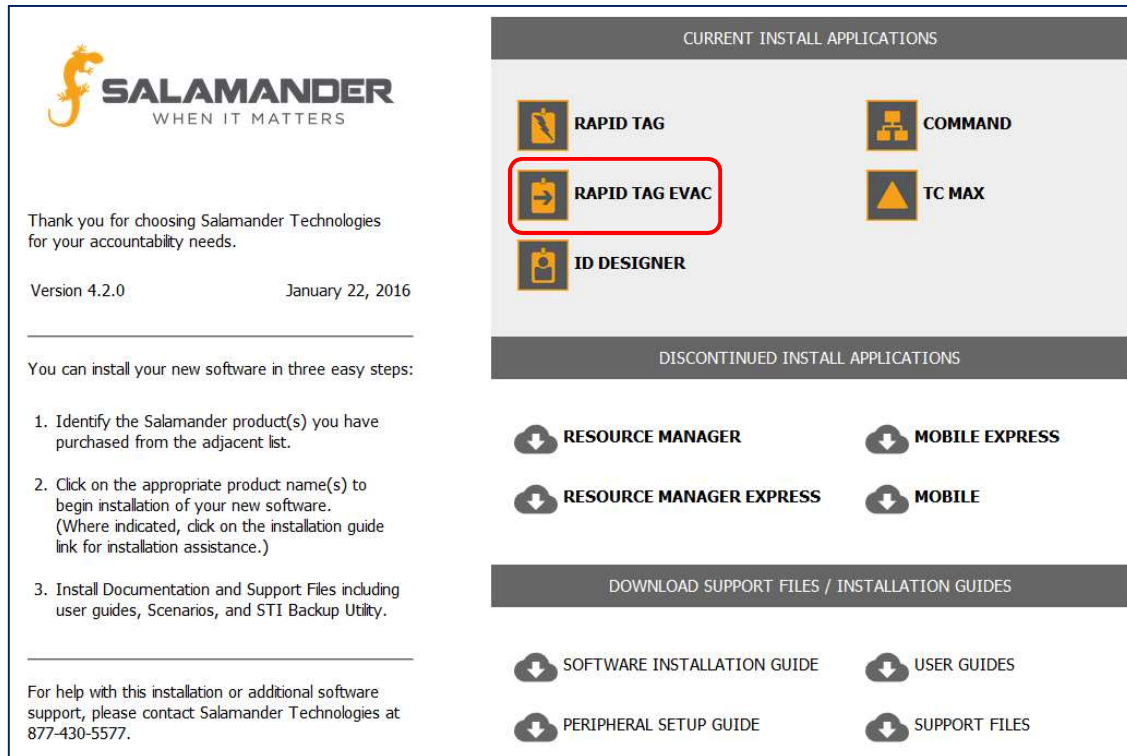


Figure 5.1.1

Step 4: Follow the prompts in the Salamander Setup Wizard.

Step 5: Click **Next** to finish the installation.

Some additional resources available are the **User Guides** and **Support Files**. The **Support Files** contain the manufacturer user guides for Salamander-sold peripherals as well as corresponding stand-alone driver and service pack installs.

5.2 From the Website





Step 1: Click the download link in the RAPID TAG EVAC order confirmation email or go to www.salamanderlive.com → **NEED HELP?** → **Resources**. The Resources web page will appear.

Step 2: Select **Install RAPID TAG EVAC**.

Step 3: Depending on the internet browser, a prompt may appear asking to run or download the rapidtagevac.exe file. If this occurs, choose to download the file. If no prompt is presented, the browser has automatically downloaded the file. This may take up to 30 minutes to download.

Resources

Below are links to the current software from Salamander. Please make sure your software is up-to-date. To check your software version, click the "About" option in the software.

PC BASED SOFTWARE	VERSION
 Install Command	Version 4.2
 Install RapidTag	Version 4.2
 Install RapidTag Evac	Version 4.0
 Install ID Designer	Version 4.0

If you need more information, or would like to receive the most recent user guide, please [contact our support](#) directly.

Links to Apps

- Install TAG for iOS
- Install TAG for Android
- Install TRACK for iOS
- Install TRACK for Android

Figure 5.2.1

Step 4: Once the rapidtagevac.exe file is downloaded, navigate to the download location (typically the **Download** folder).

Step 5: When prompted, choose to run the file and confirm any security warnings.

NOTE: The RAPID TAG EVAC installation will include SQL Compact Edition and Microsoft Visual Studio Report Viewer.

Step 6: Follow the prompts in the Salamander Setup Wizard.

Step 7: Click **Next** to finish the installation.

You may select **User Guides & Scenarios** to view Salamander's user guides and incident scenarios. You may also select **Support Files** to view manufacturer user guides for Salamander-sold peripherals as well as corresponding stand-alone drivers and software.

5.3 Licensing the RAPID TAG EVAC Software

Below is an example of the Salamander Product Information Report included with the order of the RAPID TAG EVAC software. This report contains the Application Keys for the RAPID TAG EVAC software. To license the RAPID TAG EVAC software, follow the steps below:

--- Software Products ---						
Product	Part #	Ver	Application Key	Serial #	Parser	SMA Exp
rapidTAG	IT-RT	4.0	1dbfb670-1ed1-4373-9911-82c046e72380	00117761	Yes	5/1/2014
resourceMGR	IT-RM	4.0	dfb4347c-7326-438d-8c9d-f103c7d8af59	00117762		5/1/2014
ID Designer	IT-DESIGN	4.0	32169d5d-3a18-4f12-866a-abd7bbaffd33	00117763		5/1/2014
Command	IT-COM	4.0	d9bdb146-df7b-4bec-a00b-156e43612446	00117764		5/1/2014

Figure 5.3.1



Step 1: Double-click on the **RAPID TAG EVAC Icon**. The License Activation screen will appear

Step 2: Enter the RAPID TAG EVAC Application Key into the **License Key** field.

Step 3: Click **OK** (or **Save**) and the RAPID TAG EVAC software installation process is complete.

6 CONTACT US

877.430.5171

training@salamanderlive.com

www.salamanderlive.com